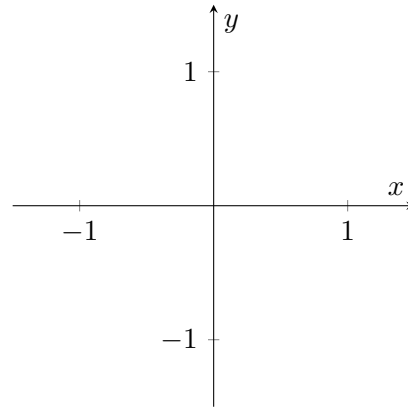
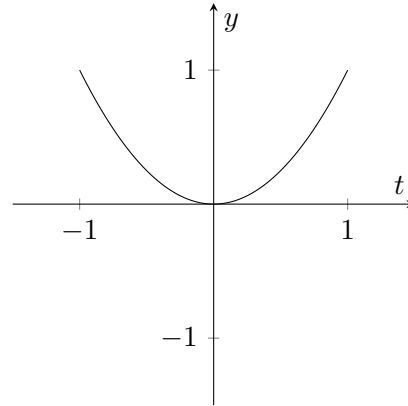
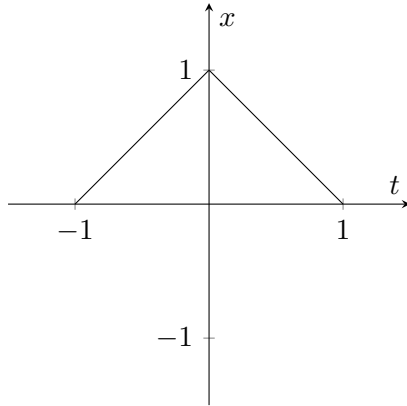


Name: _____

ID: _____

1. Use the provided graphs of $x = f(t)$ and $y = g(t)$ to sketch the parametric curve defined by these equations. Indicate with arrows the direction in which the curve is traced as t increases.



2. Sketch the curve described by the polar equation

$$r = \cos 2\theta.$$

You may find it helpful to first make a separate graph of r as a function of θ in Cartesian coordinates.

