

Installing SAP GUI on Mac OS X:

Note: This document was written based on the Mac OS X 10.6.7 – Snow Leopard operating system. No testing was performed on previous versions of the OS.

- 1) Download the file “PlatinGUI-MacOSX-720Rev5.jar”
- 2) Double-click the “PlatinGUI-MacOSX-720Rev5” file and continue through the installation procedure.

To Access SAP GUI:

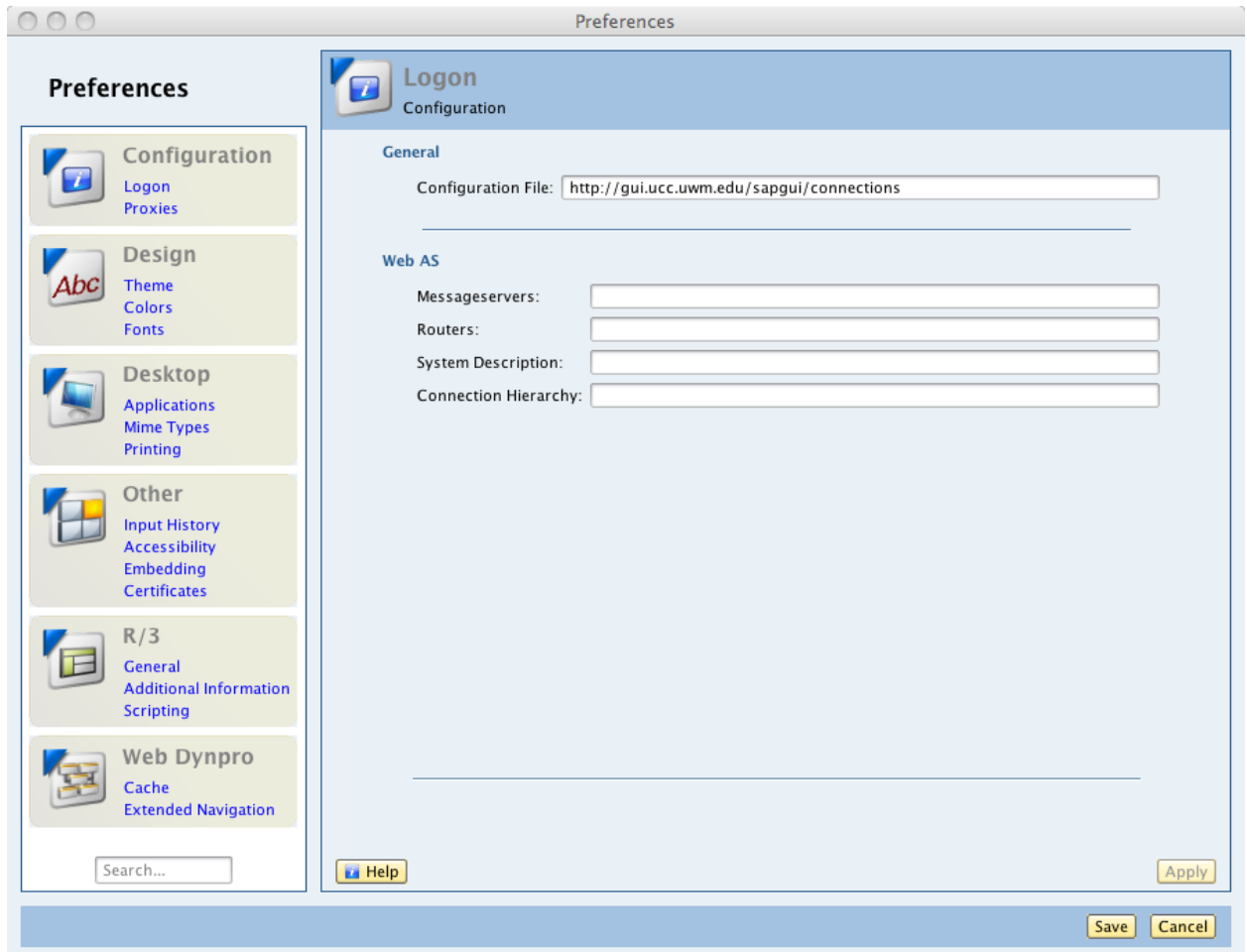
- 1) Open Finder
- 2) Click on Applications
- 3) Double-click on “SAP Clients”
- 4) Double-click on “SAPGUI 7.20rev5”
- 5) Double-click on the application “SAPGUI 7.20rev5”.

To Connect to our Servers:

- 1) Open SAP GUI
- 2) On the Mac top-menu bar, click on “SAPGUI”, then “Preferences”:



- 3) The Logon Configuration screen should appear.



- 4) Copy or enter the following URL in the "Configuration File" box:

<http://gui.ucc.uwm.edu/sapgui/connections>

- 5) Click "Apply" and then "Save".
- 6) Our servers should now be listed on your SAP GUI.