

# Children's Access To Schools

## Method 1: Intersect and Area Calculations

Purpose:

To identify the number of children, ages 5-18 living within 1km of a school.

Method:

The area and total number of children 5-18 years was determined per meshblock. A 1km buffer was calculated around each school within the Wellington City region (Figure 1). Individual buffers were dissolved into one buffer (Figure 2). Meshblocks and buffer were intersected (Figure 3). Ratio of intersected area to meshblock area was multiplied by number of children per meshblock and summed.

**Solution: 27,417 children are within 1km of a school**

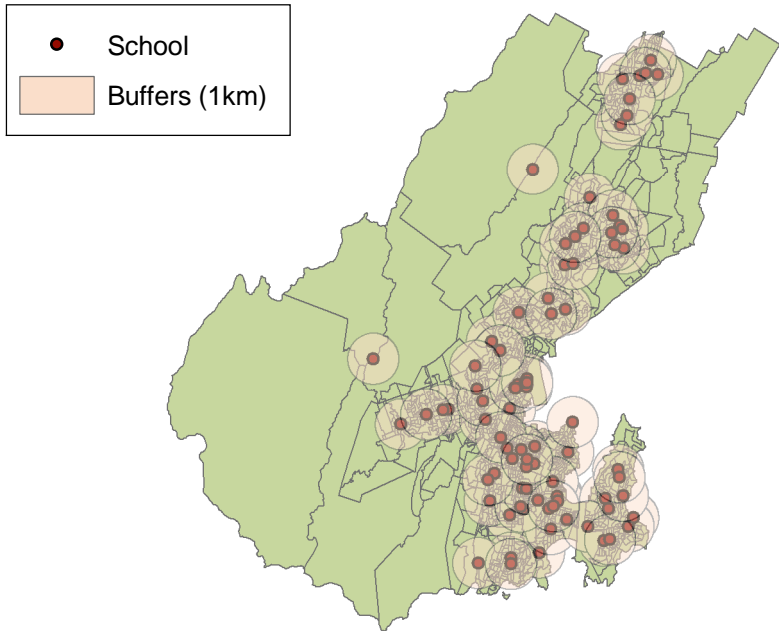


Figure 1. A 1km buffer is drawn around schools in the Wellington City region

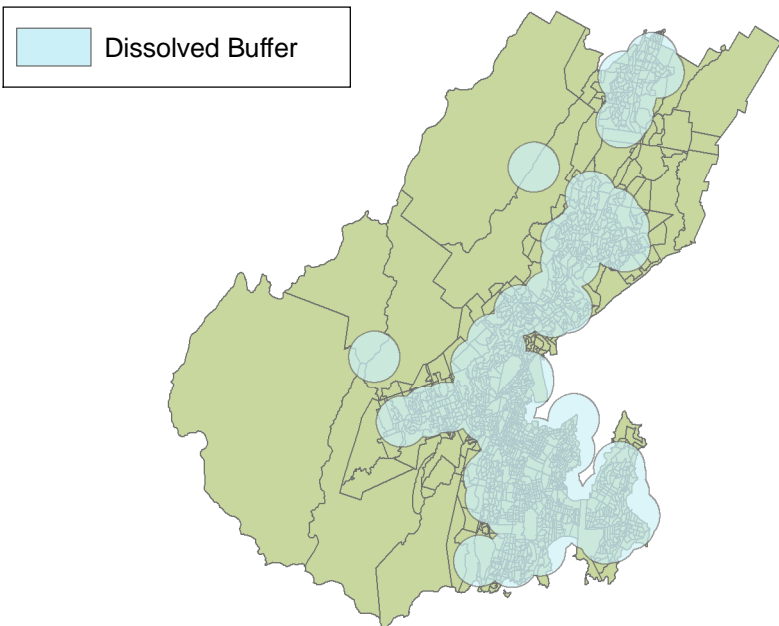


Figure 2. Individual buffers dissolved into one new buffer feature

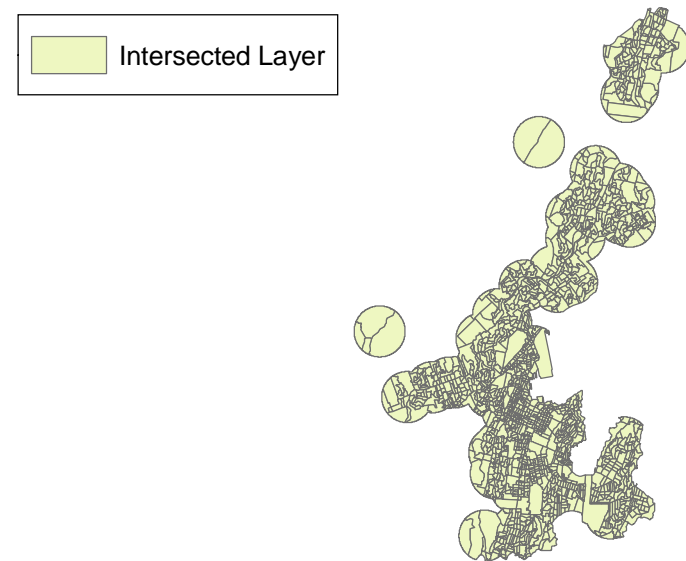


Figure 3. An intersection results in a new layer where the meshblocks and buffer coincide. Remaining meshblock portions can be calculated for area.