

20th Annual NASSGAP/NCHELP Financial Aid Research Conference
Annapolis, MD
May, 2003

Changes in Tuition Policy:
Natural Policy Experiments in Five Countries

Donald E. Heller

PENNSTATE



COLLEGE *of* EDUCATION

CENTER FOR THE STUDY OF HIGHER EDUCATION

Project Summary

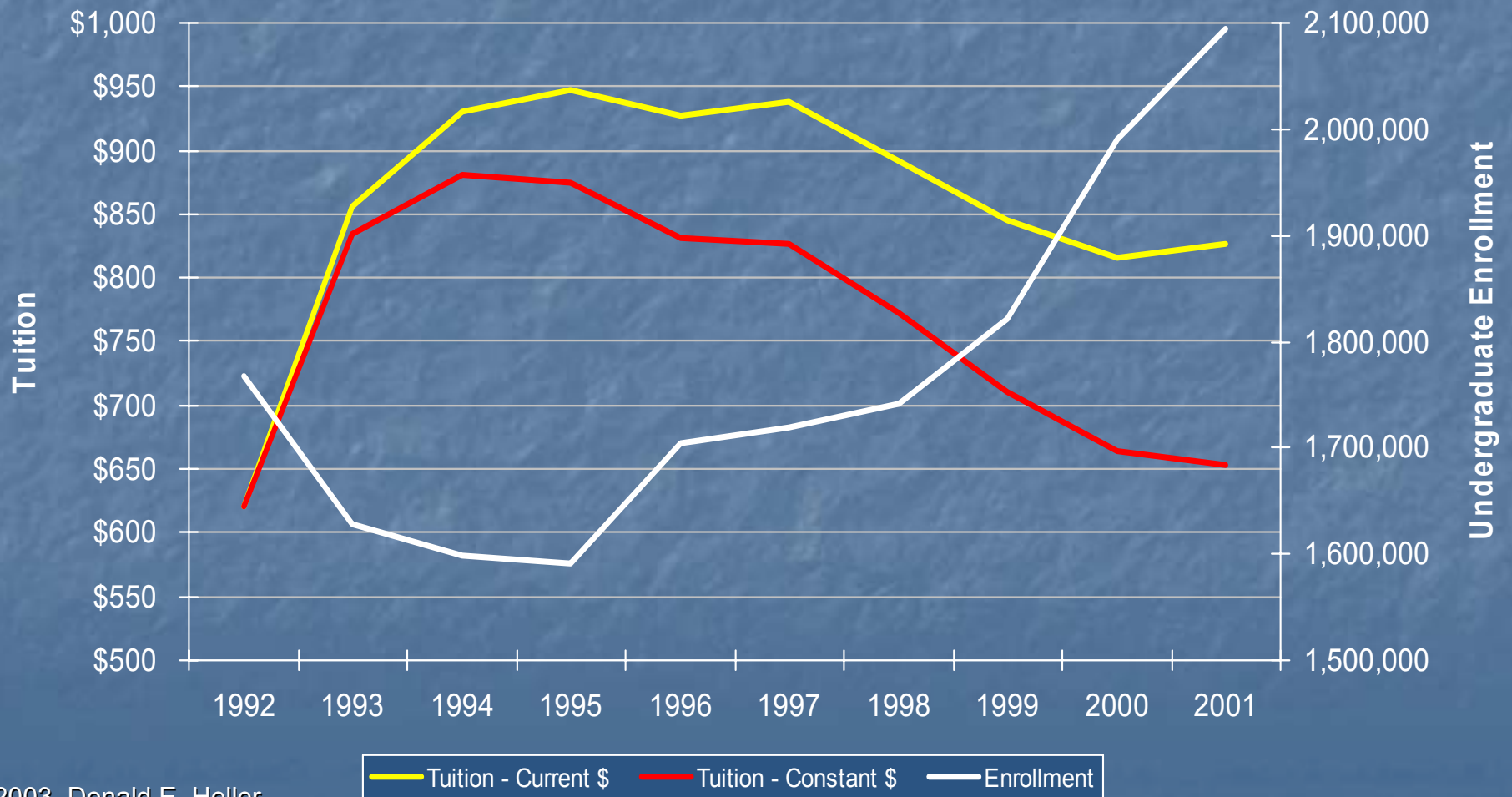
■ Goals

- Use differences in tuition pricing policies among states as a simplified natural experiment
- Relate pricing policies to enrollment effects
- Test the symmetry of enrollment effects of tuition price changes

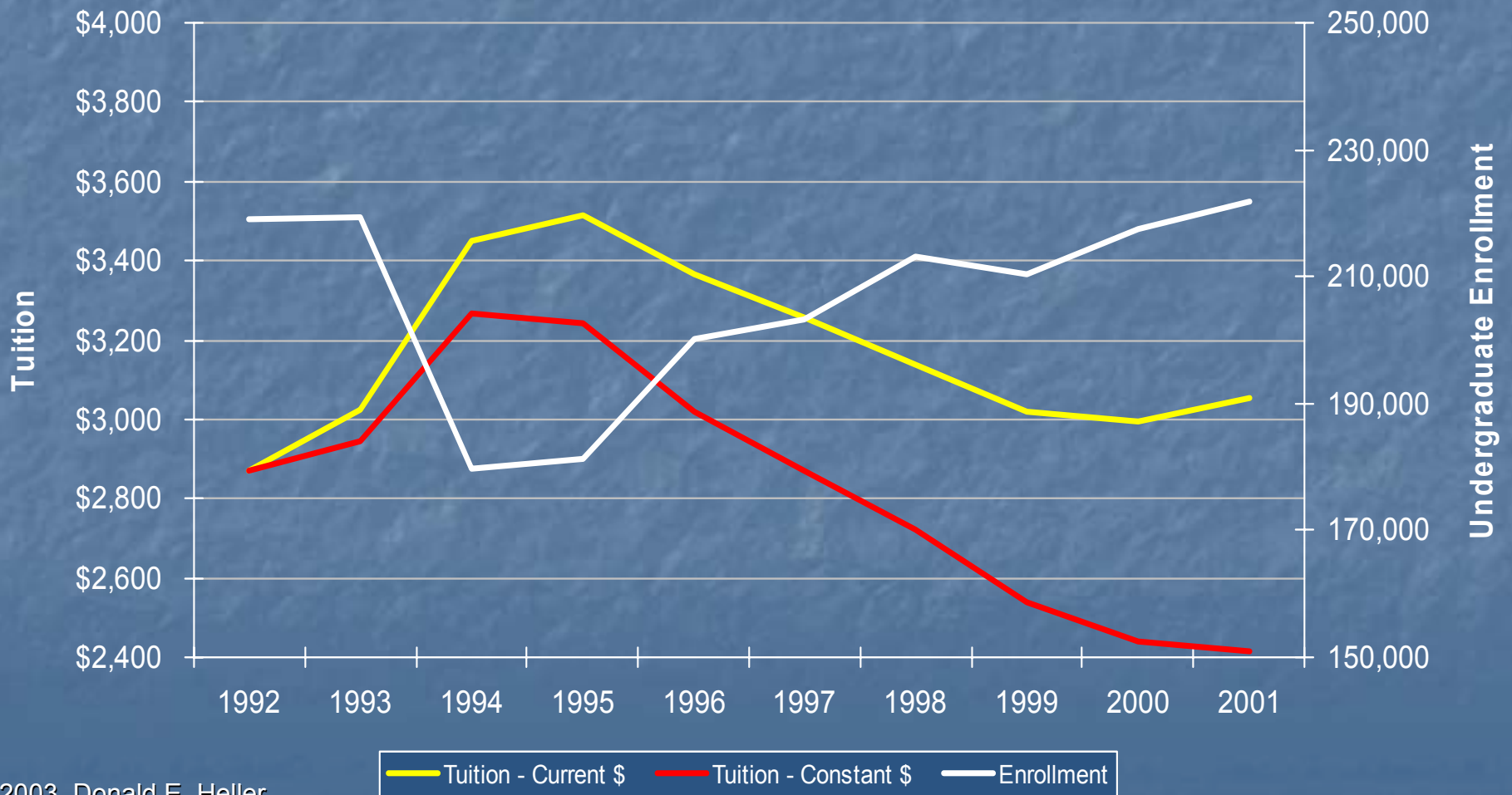
■ Focus

- 1990s tuition cuts in three states: California, Massachusetts, and Virginia

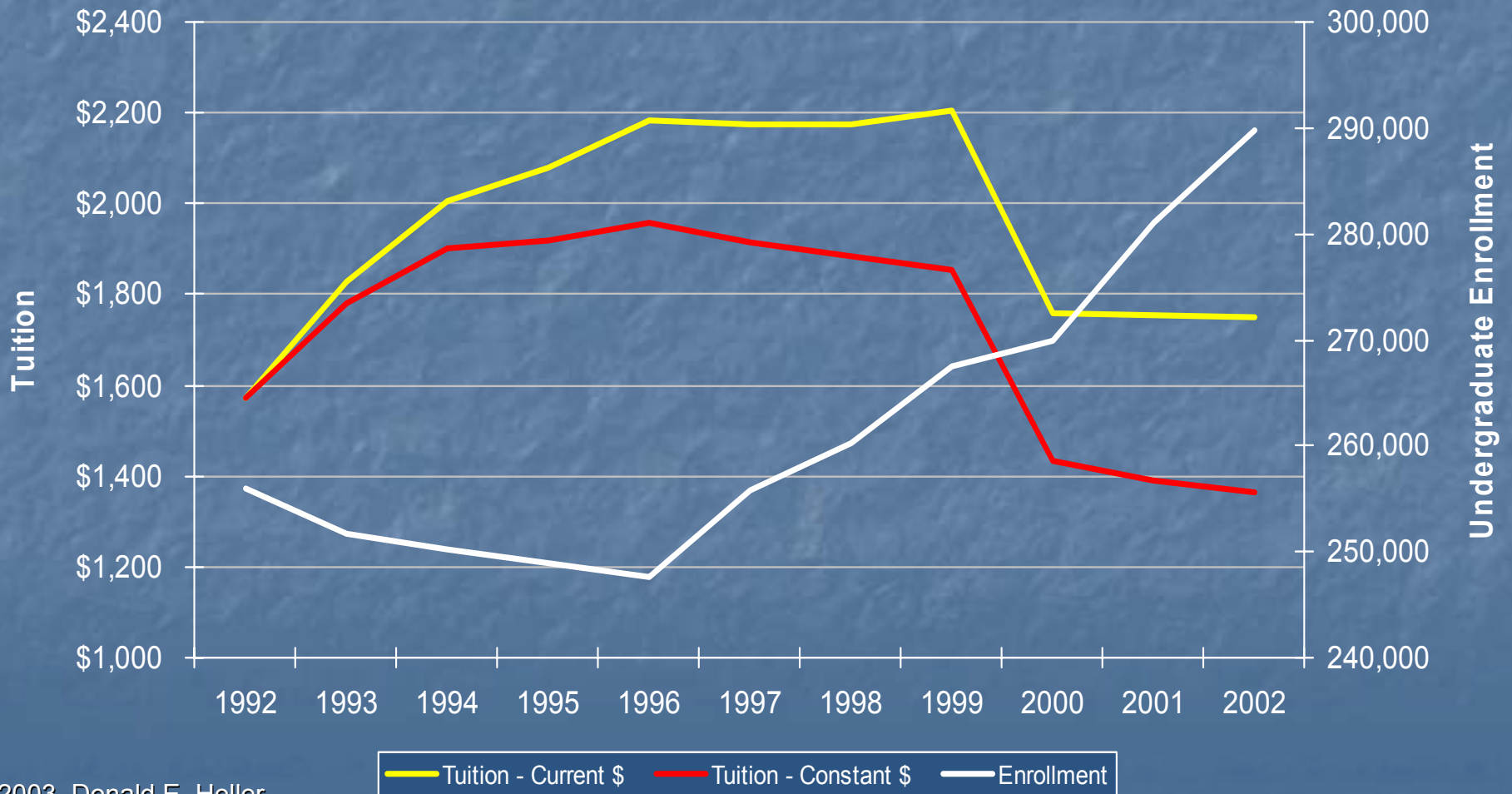
Tuition and Enrollment - California



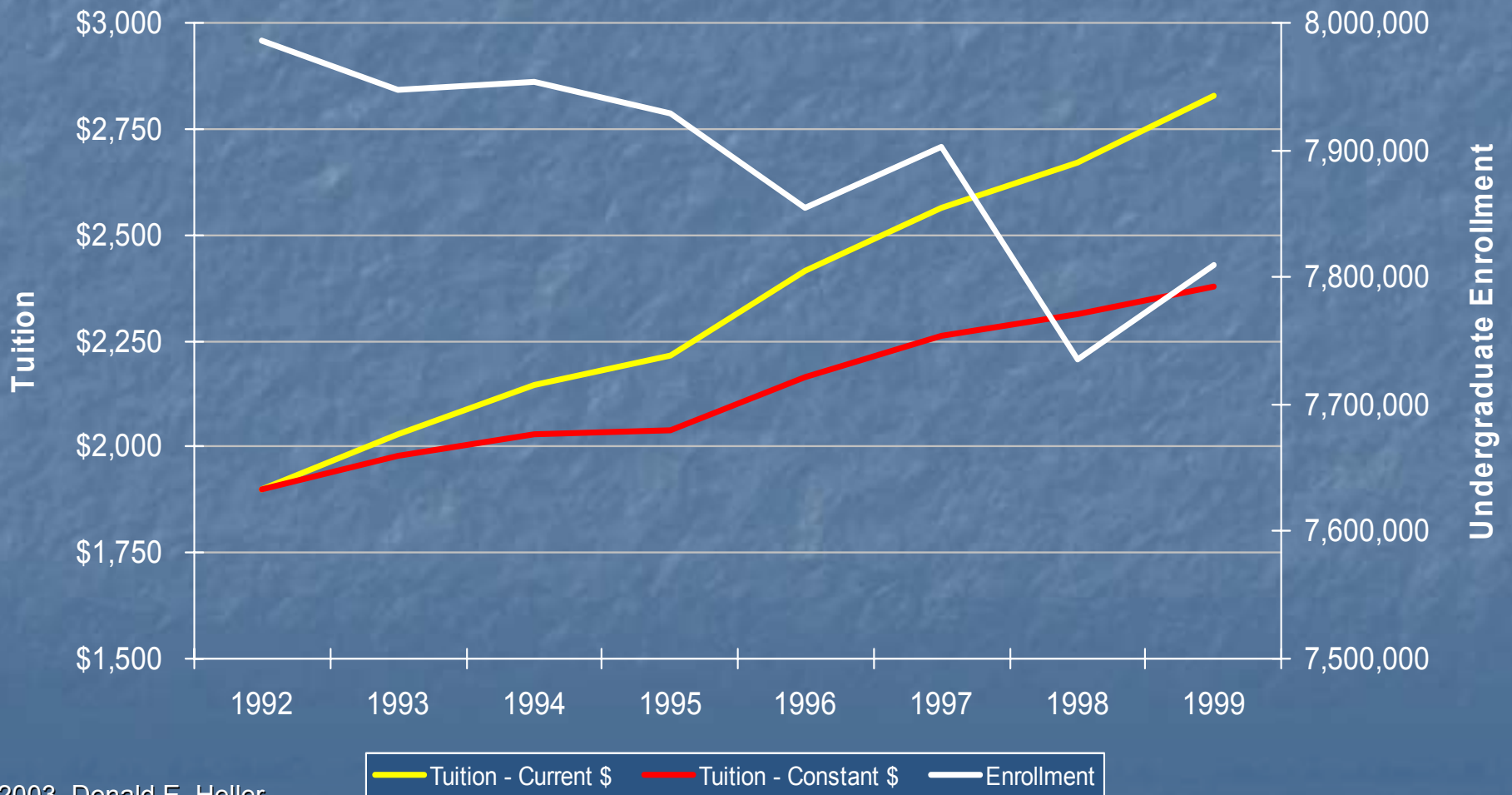
Tuition and Enrollment - Massachusetts



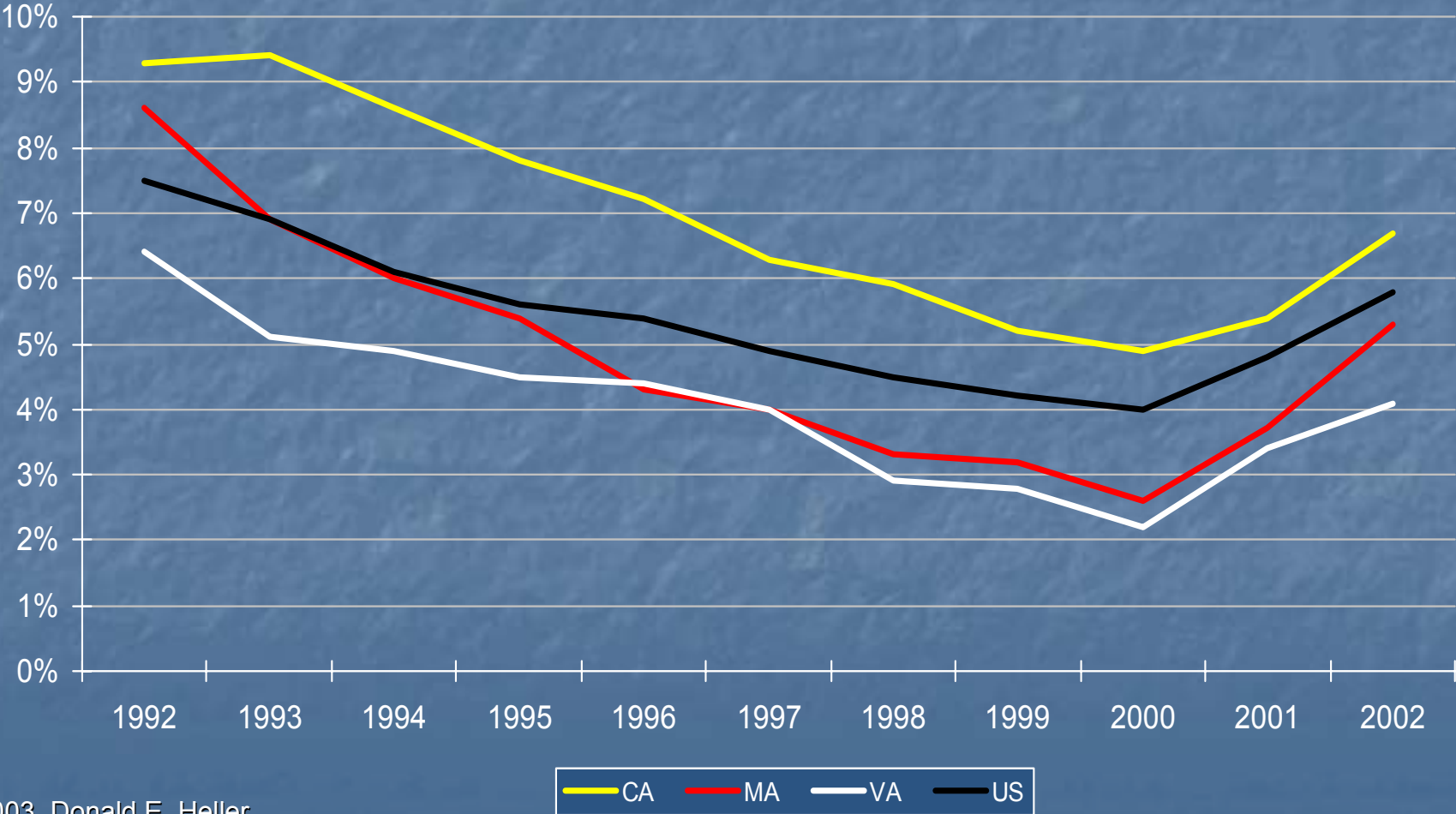
Tuition and Enrollment - Virginia



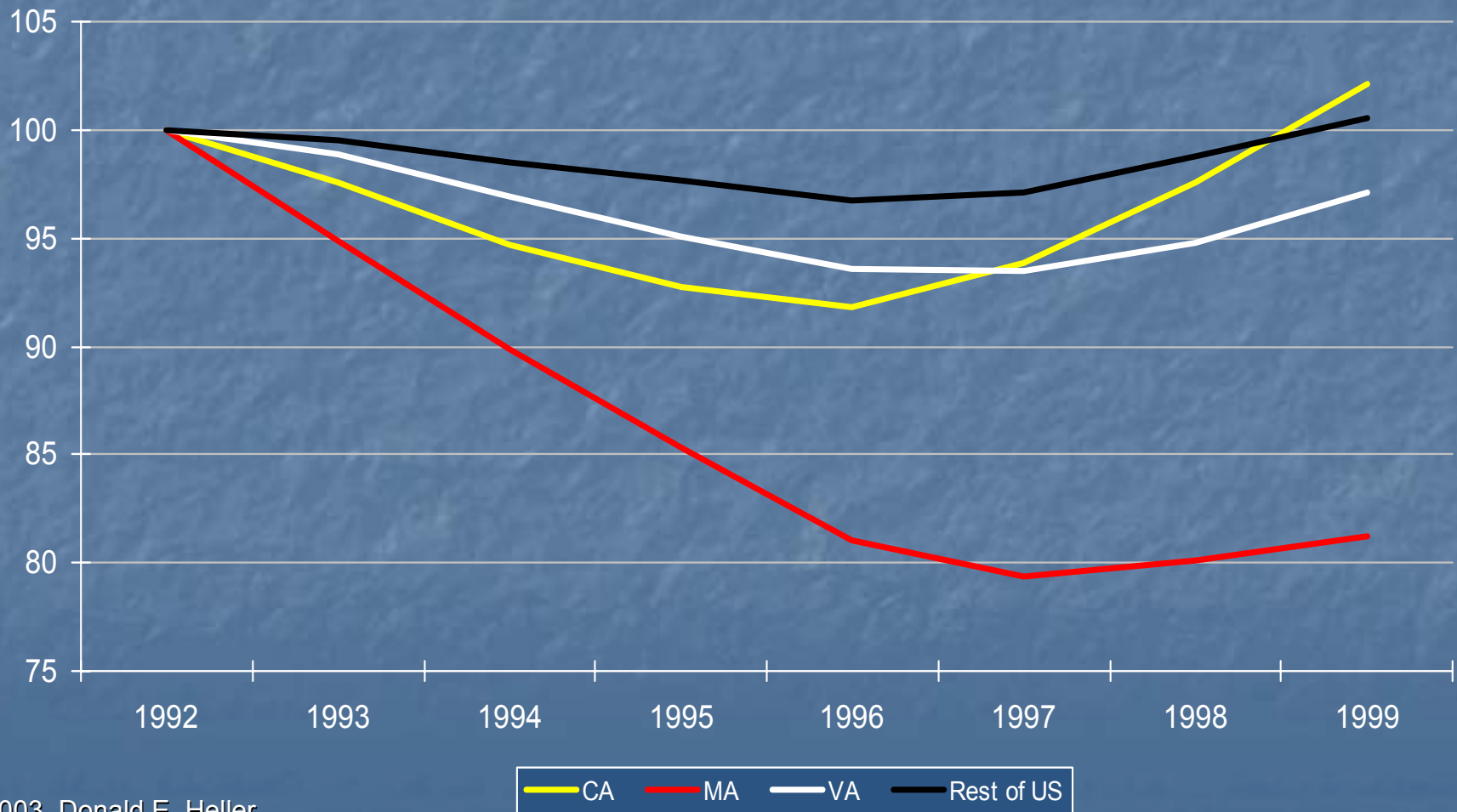
Tuition and Enrollment – Remaining States



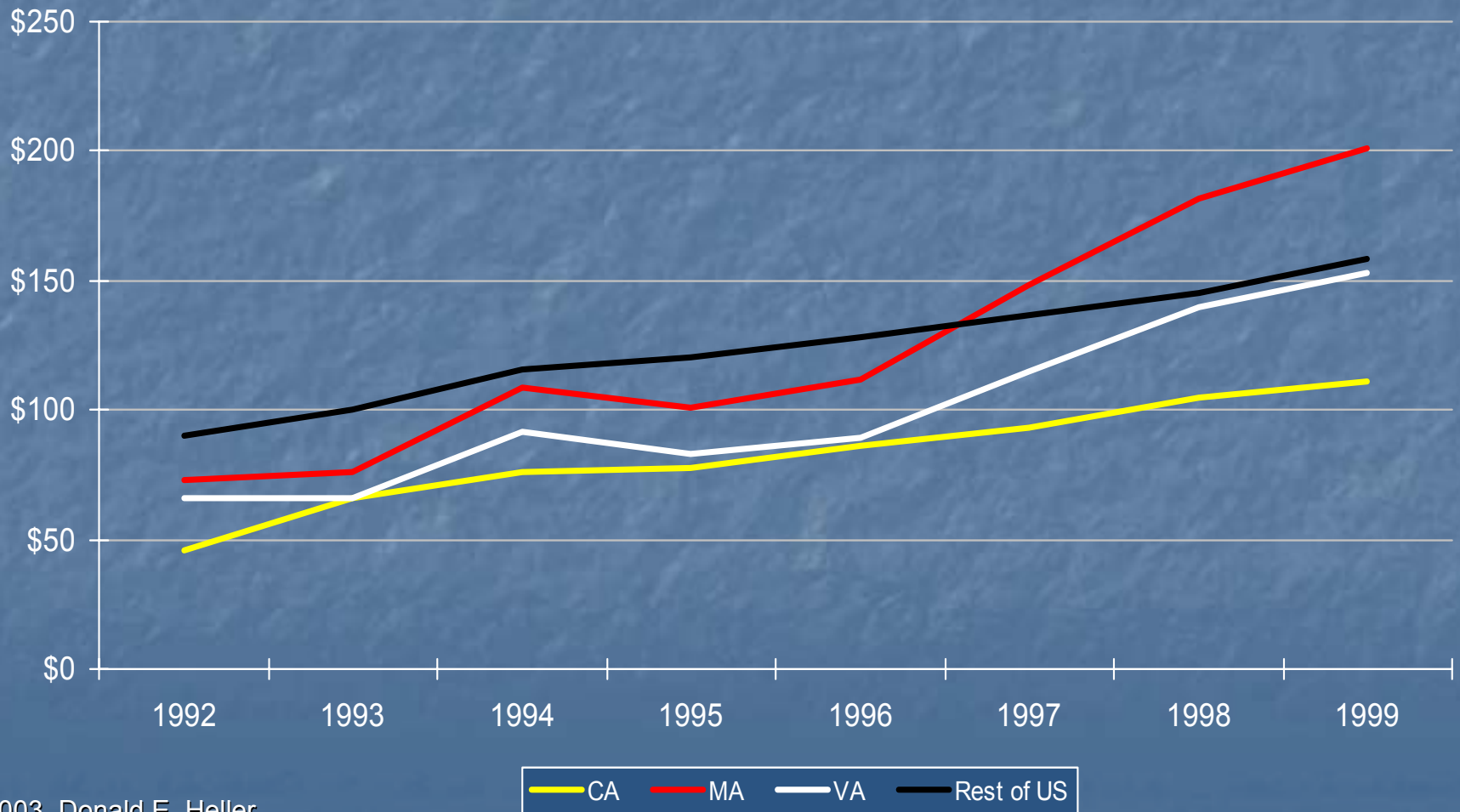
Annual Unemployment Rates



18-24 Population (Index: 1992=100)



State Aid per 18-24 Population



Conclusions

- Enrollments in the three states increased after prices were cut, running counter to the national trend
- Economic conditions, demographics, and state aid funding do not seem to explain the phenomenon