



# The Quickest Web Site Design Tutorial Ever!

Cole Camplese



# Overview

---

- Planning to build your site
- Designing your site
- Using Dream Weaver
- The assignment

# Planning

# Simple Design Process

---

- A simple ADDIE model
    - Analysis: What is the gap?
    - Design: Story-board, content, define objectives, layout
    - Development: Creation
    - Implementation: Delivery
    - Evaluation: Does it fill the gap?
-

# Analysis

---

- What are you trying to communicate?
  - What is the purpose of the site?
  - Who is your audience?
  - Does it require a page or a site?
- 



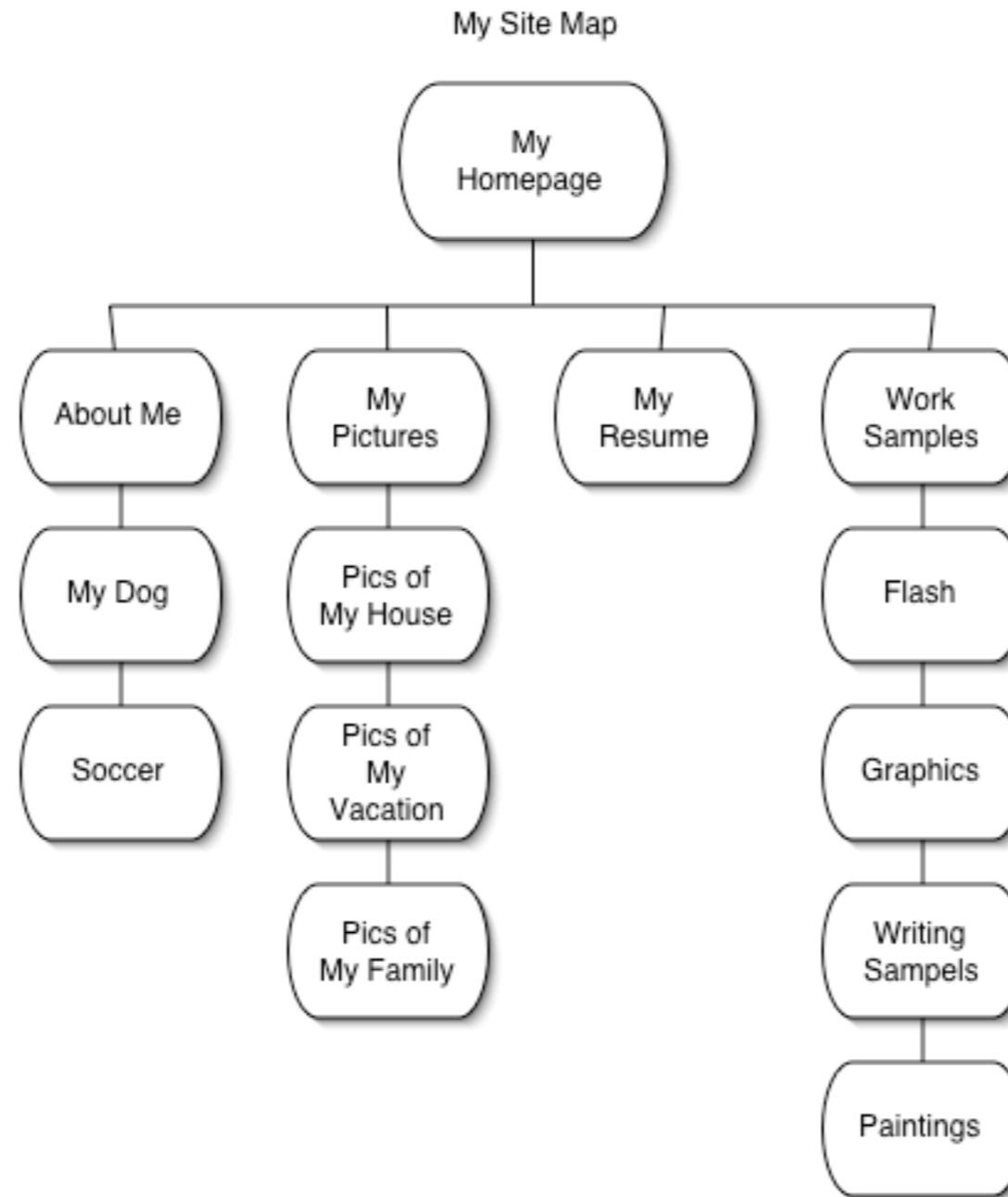
Designing

# Design

---

- Outline & site map
  - Story-board the “template”
    - Including navigation scheme
  - Establish a style guide (CSS)
  - Remember accessibility
  - Create content
-

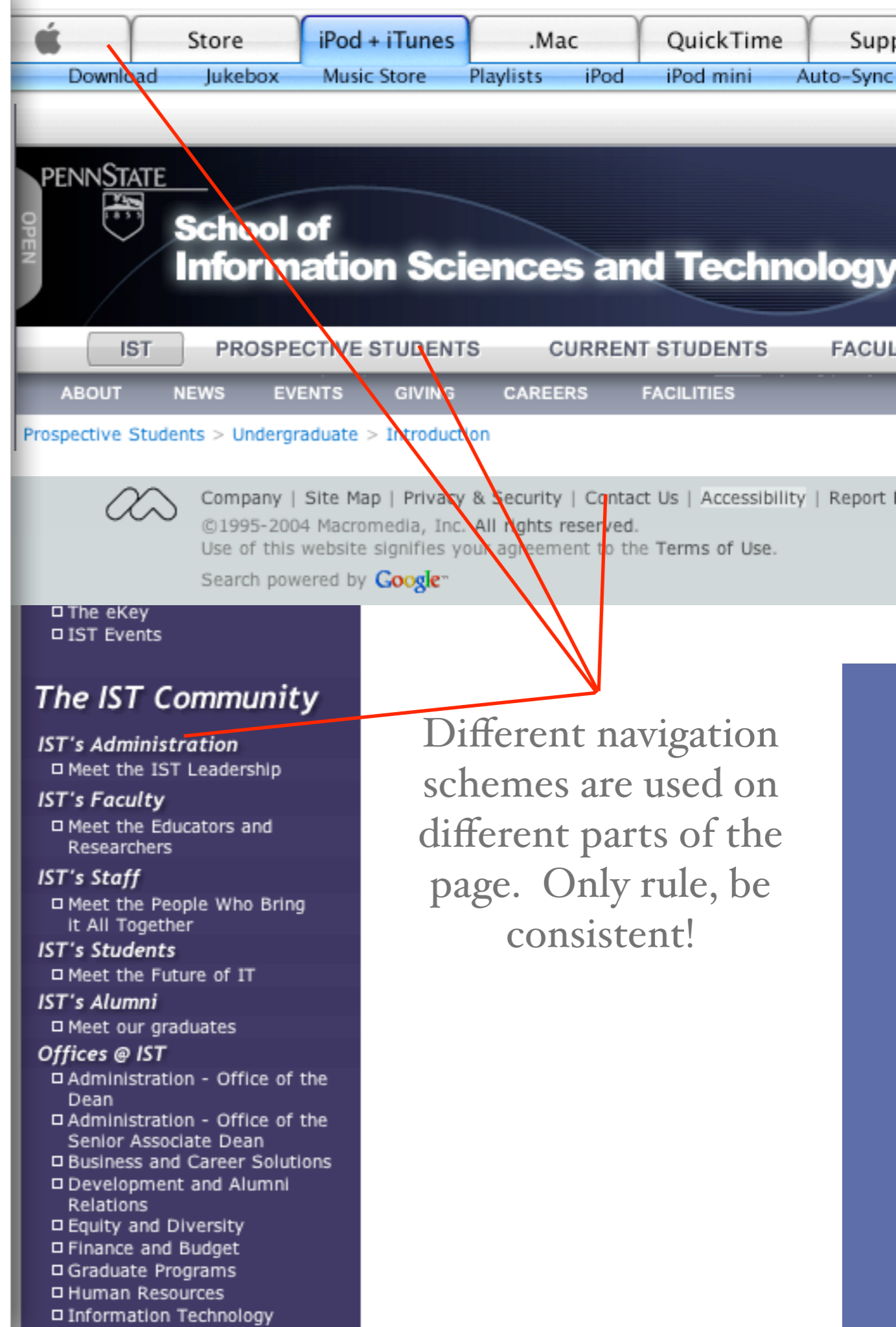
# The Site Map



Pervasive Links: [Contact Me](#), [Search](#), [Home](#), [About Me](#), [My Pictures](#), [My Resume](#), [Work Samples](#)

# Navigation

- Based on the site map:
  - Primary navigation
  - Secondary navigation
  - Bread trails
  - Footer navigation



Different navigation schemes are used on different parts of the page. Only rule, be consistent!

# Your Style Guide

---

- Establish your look and feel
- Use the color wheel for help
- Document common elements



## Monochromatic Color Scheme

The [monochromatic color scheme](#) uses variations in lightness and saturation of a single color. This scheme looks clean and elegant. Monochromatic colors go well together, producing a soothing effect. The monochromatic scheme is very easy on the eyes, especially with blue or green hues.



## Analogous Color Scheme

The [analogous color scheme](#) uses colors that are adjacent to each other on the color wheel. One color is used as a dominant color while others are used to enrich the scheme. The analogous scheme is similar to the monochromatic, but offers more nuances.



## Complementary Color Scheme

The [complementary color scheme](#) consists of two colors that are opposite each other on the color wheel. This scheme looks best when you place a warm color against a cool color, for example, red versus green-blue. This scheme is intrinsically high-contrast.

# The Story-Board

- Create a hand or computer drawn story-board that provides a visual representation of each page
- Make your navigation, content, and other elements fit into the story-board
- Use tables to hold it all together



Draw your tables before you start building in DreamWeaver

# Accessibility

---

- You must take steps to address the needs of ALL potential visitors
- Represents a huge challenge:
  - 20% of users have functional limitations
  - 8% have distinct disabilities
- By the way, its law: Section 508
  - <http://www.access-board.gov/sec508/508standards.htm>

Alt Tags

Screen Readers

# Content Creation

---

- Good idea to write your content outside of DreamWeaver
- Use your site map to create the appropriate content
- Move into the site after you've established the look, feel, and layout in DreamWeaver

# Tutorial